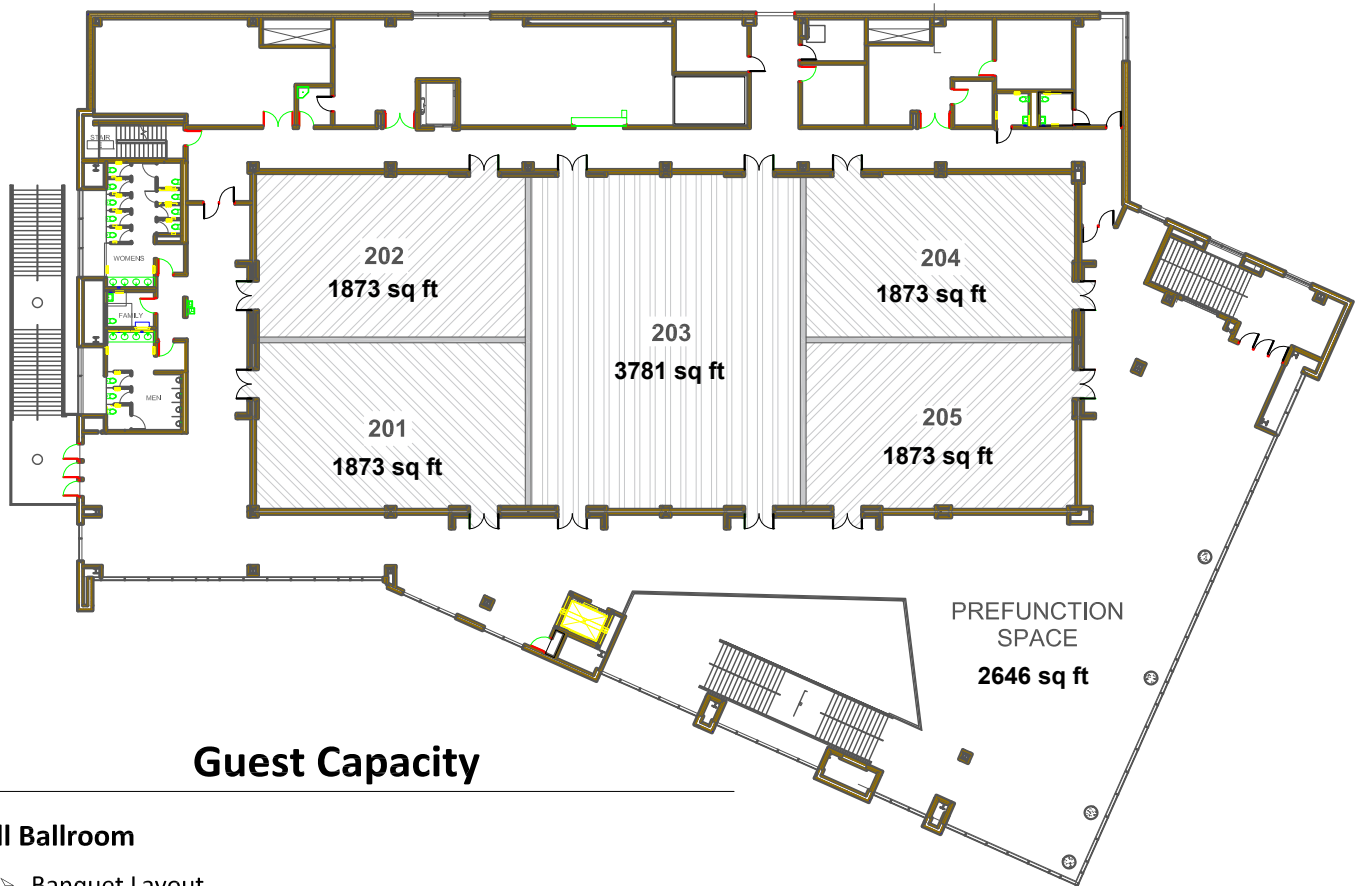


ASEC Assembly Space

Capacities & Combined Sections



Guest Capacity

Full Ballroom

- Banquet Layout
 - ❖ 592 - seats, 74 banquet tables (each table seats 8 people), 7 sections of stage with ramp.
- Assembly Layout
 - ❖ 1200 - seats, 7 sections of stage with ramp.
- Conference/Science Show Layout
 - ❖ 104 - 30" x 72" tables.

Section 201, 202, 204, or 205

- Banquet Layout
 - ❖ 96 - seats, 12 banquet tables (each table seats 8 people), 1 podium.
- Assembly Layout
 - ❖ 195 - seats, 1 podium.
- Conference/Science Show Layout
 - ❖ 15 - 30" x 72" tables.

Section 201 & 202, 204 & 205, or 203

- Banquet Layout
 - ❖ 160 - seats, 20 banquet tables (each table seats 8 people), 5 sections of stage with ramp.
- Assembly Layout
 - ❖ 360 - seats, 1 podium, 7 sections of stage with ramp.
- Conference/Science Show Layout
 - ❖ 42 - 30" x 72" tables.