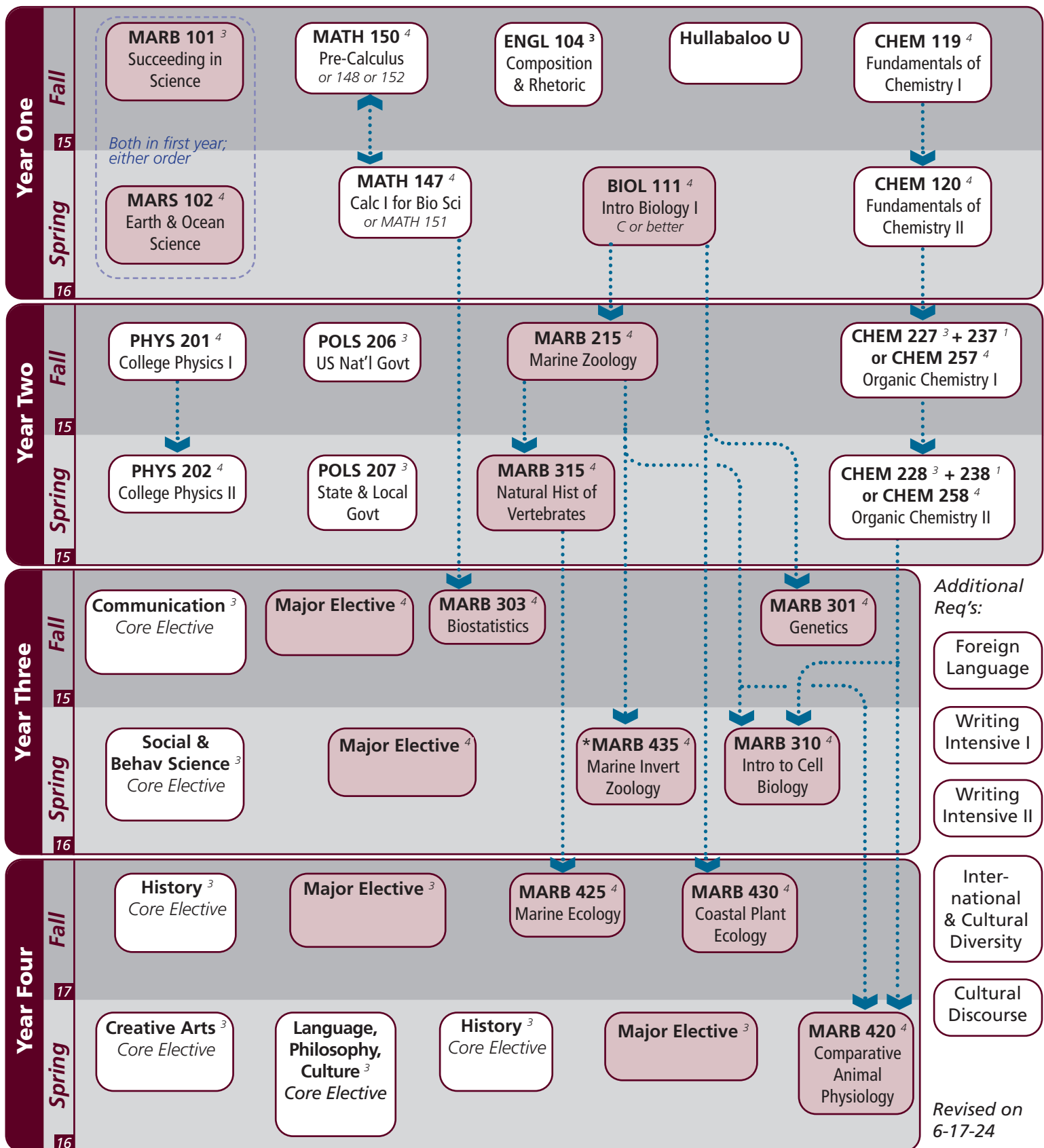


Catalog information: [catalog.tamu.edu](http://catalog.tamu.edu)

“View Degree Evaluation”: <https://howdy.tamu.edu/uPortal/f/my-record/>

Key	Complete	Upcoming Term	Possible Adjustment	<sup>15</sup> Semester Credit Hrs	<sup>3</sup> Course Credit Hrs	Major GPA	..... Pre-requisite	* Writing Intensive



# Marine Biology | 2024-2025 Catalog

Notes:

Major	Texas A&M University at Galveston Course Options					
Major Coursework	^BIOL 111 MARB 315	MARB 101 MARB 420	MARB 215 MARB 425	MARB 301 MARB 430	MARB 303 MARB 435	MARB 310 MARS 102
Major Electives <sup>14</sup> Select 14 hours	BIOL 351 MARS 300-499	FSCI 360	MARB 300-499 (only up to two from 400, 401, 403, & 407)			
^ Requires C or better						

Core	Texas A&M University at Galveston Course Options					
Communication <sup>6</sup>	Required: Select 1 from:	†ENGL 104 COMM 203	COMM 205	†ENGL 203	ENGL 210	
Mathematics <sup>8</sup> Both courses required	MATH 147	MATH 148, 150, or 152				
Life & Physical Sciences <sup>24</sup> All courses required	CHEM 119 PHYS 201	CHEM 120 PHYS 202	CHEM 227	CHEM 237	CHEM 228	CHEM 238
Language, Philosophy, Culture <sup>3</sup> Select 1 course	†ANTH 210 ENGL 335 HIST 242	ANTH 316 *ENGL 338 MAST 270	*ENGL 204 *ENGL 374 †PHIL 111	*ENGL 253 *GEOG 202 PHIL 251	ENGL 330 *GEOG 301	ENGL 334
Creative Arts <sup>3</sup> Select 1 course	*ARTS 150 †PERF 301	ENGL 212	*ENGL 251	HISP 204	*PERF 226	*PERF 281
Social & Behavioral Science <sup>3</sup> Select 1 course	ANTH 202 *MARS 210	*COMM 365 *PBSI 107	ECON 202 *SOCI 205	ECON 203 *SPMT 336	*GEOG 201 *SPMT 337	*KINE 282
American History <sup>6</sup> Select 2 courses	HIST 105	HIST 106	HIST 226	HIST 232		
Political Science <sup>6</sup> Both courses required	POLS 206	POLS 207				

University	Texas A&M University at Galveston Course Options					
Writing Intensive <sup>6</sup> Select 2 courses	BIOL 351	MARB 403	MARB 408	MARB 433	MARB 435	MARB 445
International and Cultural Diversity <sup>3</sup> Select 1 course	Note that any * marked major or core course will concurrently fulfill both requirements					
	*ARTS 150	*COMM 365	*ENGL 204	*ENGL 251	*ENGL 253	*ENGL 338
	*ENGL 374	*GEOG 201	*GEOG 202	*GEOG 301	HIST 405	*KINE 282
	MARA 440 MART 400	MARE 400	MARR 400	*MARS 210	MARS 280	MARS 432
	*SOCI 205	MAST 411 *SPMT 336	*PERF 226 *SPMT 337	*PERF 281	NAUT 400	*PBSI 107
	Pending final approval					
Cultural Discourse <sup>3</sup> Select 1 course	Note that any † marked major or core course will concurrently fulfill both requirements					
	†ANTH 210	†ENGL 104	†ENGL 203	FSCI 334	MARA 373	†MARB 445
	MAST 226	MAST 340	†PERF 301	†PHIL 111		
General Electives	Free electives as needed to reach 120 cumulative hours					

- Courses in this section can concurrently fulfill a Core or Major Requirement;
- Two semesters of a single foreign language is required for students who did not complete the foreign language req in high school