

Marine Engineering Technology - LO | 2024-2025

Name: _____

Catalog information: catalog.tamu.edu

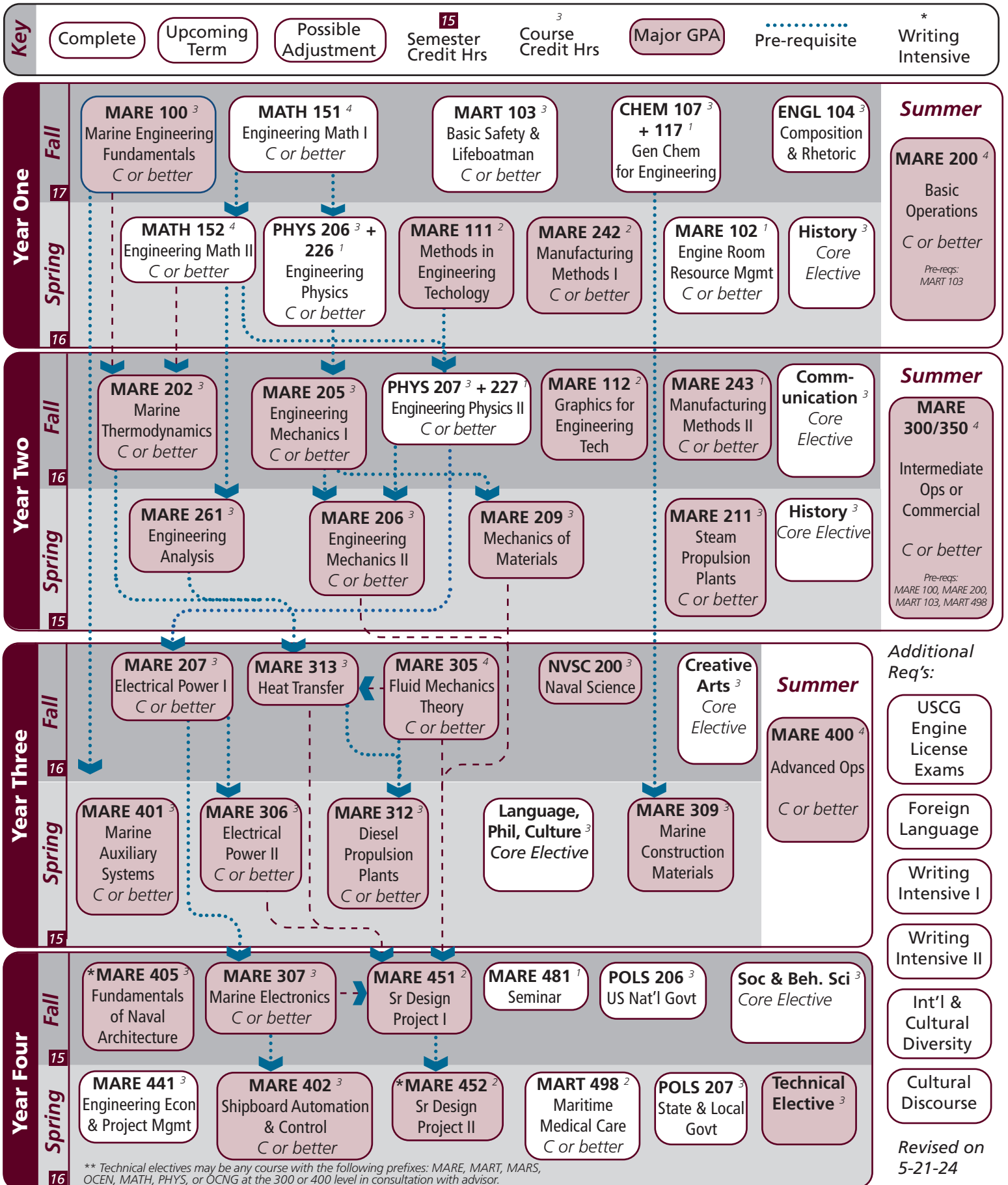
UIN: _____

“View Degree Evaluation”: <https://howdy.tamu.edu/uPortal/f/my-record/>

Every Fall & Spring:

ZOPT 100⁰
CORPS

ZOPT 300⁰
engine option



** Technical electives may be any course with the following prefixes: MARE, MART, MARS, OCEN, MATH, PHYS, or OCNG at the 300 or 400 level in consultation with advisor.

Revised on 5-21-24

Marine Engineering Technology - LO | 2024-2025 Catalog

Notes:

| Major | TAMUG Course Options | | | | | |
|--|---|-----------|------------------------------|--------------|------------------|--------------|
| Major Coursework | ^MARE 100 | ^MARE 102 | MARE 111 | MARE 112 | ^MARE 200 | ^MARE 202 |
| | ^MARE 205 | ^MARE 206 | ^MARE 207 | MARE 209 | ^MARE 211 | ^MARE 242 |
| | ^MARE 243 | MARE 261 | ^MARE 300 or MARE 350 | | ^MARE 305 | ^MARE 306 |
| | ^MARE 307 | MARE 309 | ^MARE 312 | MARE 313 | <i>^MARE 400</i> | ^MARE 401 |
| | ^MARE 402 | ^MARE 405 | MARE 441 | MARE 451 | MARE 452 | MARE 481 |
| | ^MART 103 | ^MART 498 | NVSC 200 | | | |
| Technical Electives ³ Select 3 hours | In consultation with advisor: OCEN 300-499 OCNG 300-499 | | MARE 300-499 PHYS 300-499 | MARS 300-499 | MART 300-499 | MATH 300-499 |

^ Requires C or better

| Core | Texas A&M University at Galveston Course Options | | | | | |
|--|--|-----------------------------------|-------------------------------------|---|------------------------|-----------|
| Communication ⁶ Select 2 courses | Required: Select 1 from: | †ENGL 104 COMM 203 | COMM 205 | †ENGL 203 | ENGL 210 | |
| Mathematics ⁸ Both courses required | ^MATH 151 | ^MATH 152 | | | | |
| Life & Physical Sciences ¹² All courses required | CHEM 107 | CHEM 117 | ^PHYS 206 | PHYS 226 | ^PHYS 207 | PHYS 227 |
| Language, Philosophy, Culture ³ Select 1 course | †ANTH 210 ENGL 335 HIST 242 | ANTH 316 *ENGL 338 MAST 270 | *ENGL 204 *ENGL 374 †PHIL 111 | <i>*ENGL 253</i> *GEOG 202 PHIL 251 | ENGL 330 *GEOG 301 | ENGL 334 |
| Creative Arts ³ Select 1 course | *ARTS 150 *THEA 281 | ENGL 212 | *ENGL 251 | HISP 204 | *MUSC 226 | †PERF 301 |
| Social & Behavioral Science ³ Select 1 course | ANTH 202 *MARS 210 | <i>*COMM 365</i> *PBSI 107 | ECON 202 *SOCI 205 | ECON 203 *SPMT 336 | *GEOG 201 *SPMT 337 | *KINE 282 |
| American History ⁶ Select 2 courses | HIST 105 | HIST 106 | HIST 226 | HIST 232 | | |
| Political Science ⁶ Both courses required | POLS 206 | POLS 207 | | | | |

| University | Texas A&M University at Galveston Course Options | | | | | |
|--|---|---|--|---|---|--|
| Writing Intensive ⁶ | MARE 405 | MARE 452 | | | | |
| International and Cultural Diversity ³ Select 1 course | Note that any * marked major or core course will concurrently fulfill both requirements | | | | | |
| | *ARTS 150 *ENGL 374 MARA 440 MAST 411 *SPMT 337 | *COMM 365 *GEOG 201 <i>MARE 400</i> *MUSC 226 *THEA 281 | *ENGL 204 *GEOG 202 *MARS 210 <i>NAUT 400</i> | *ENGL 251 *GEOG 301 MARS 280 *PBSI 107 | ENGL 253 <i>HIST 405</i> <i>MARS 432</i> *SOCI 205 | *ENGL 338 *KINE 282 <i>MART 400</i> *SPMT 336 |
| | <i>Pending final approval</i> | | | | | |
| Cultural Discourse ³ Select 1 course | Note that any † marked major or core course will concurrently fulfill both requirements | | | | | |
| | †ANTH 210 MAST 226 | †ENGL 104 MAST 340 | †ENGL 203 †PERF 301 | FSCI 334 †PHIL 111 | MARA 373 | MARB 445 |
| General Electives | Free electives as needed to reach 120 cumulative hours | | | | | |

- Courses in this section can concurrently fulfill a Core or Major Requirement;
- Two semesters of a single foreign language is required for students who did not complete the foreign language req in high school